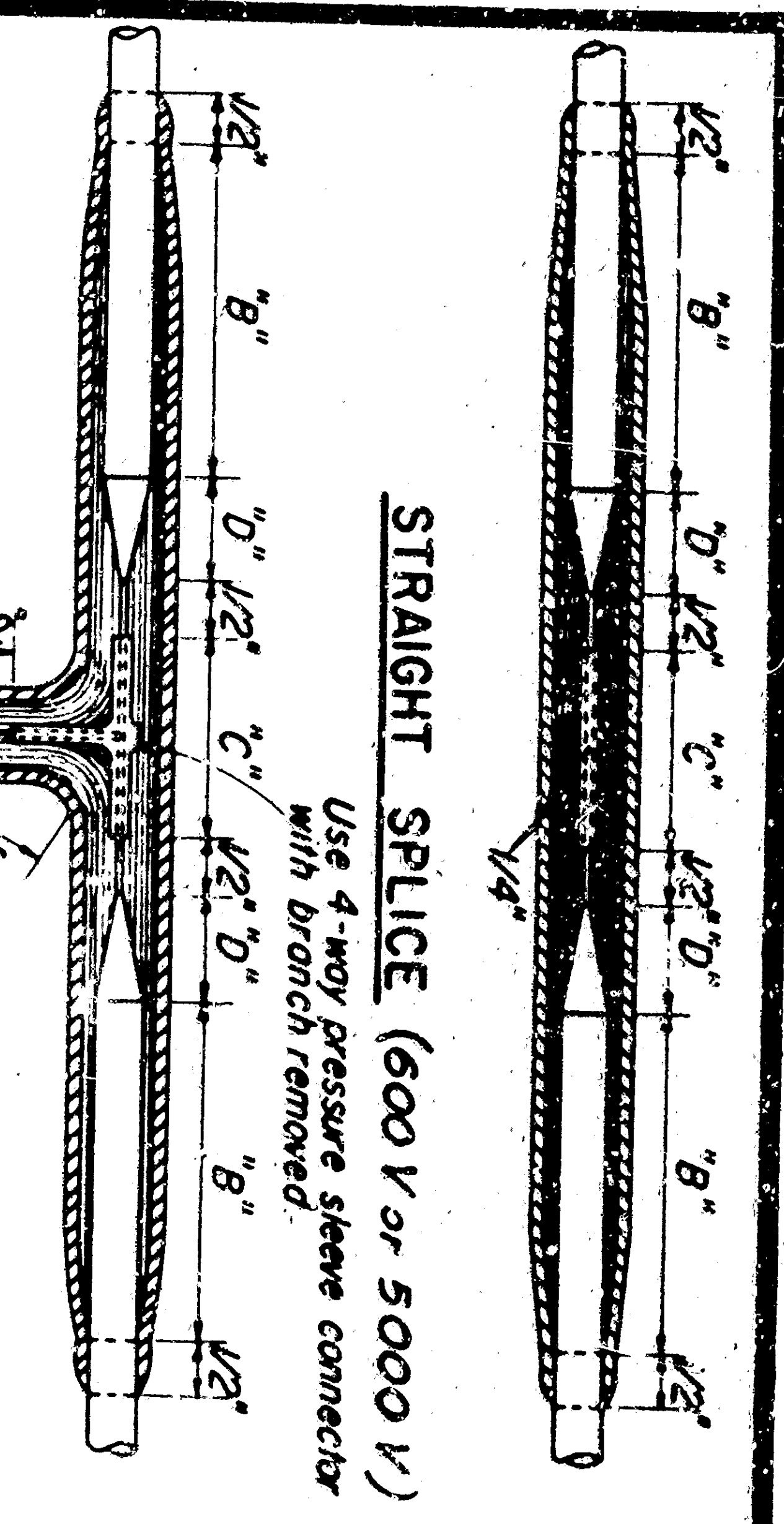


DATE	COUNT	NO.	SECTION	BY	CHKD.

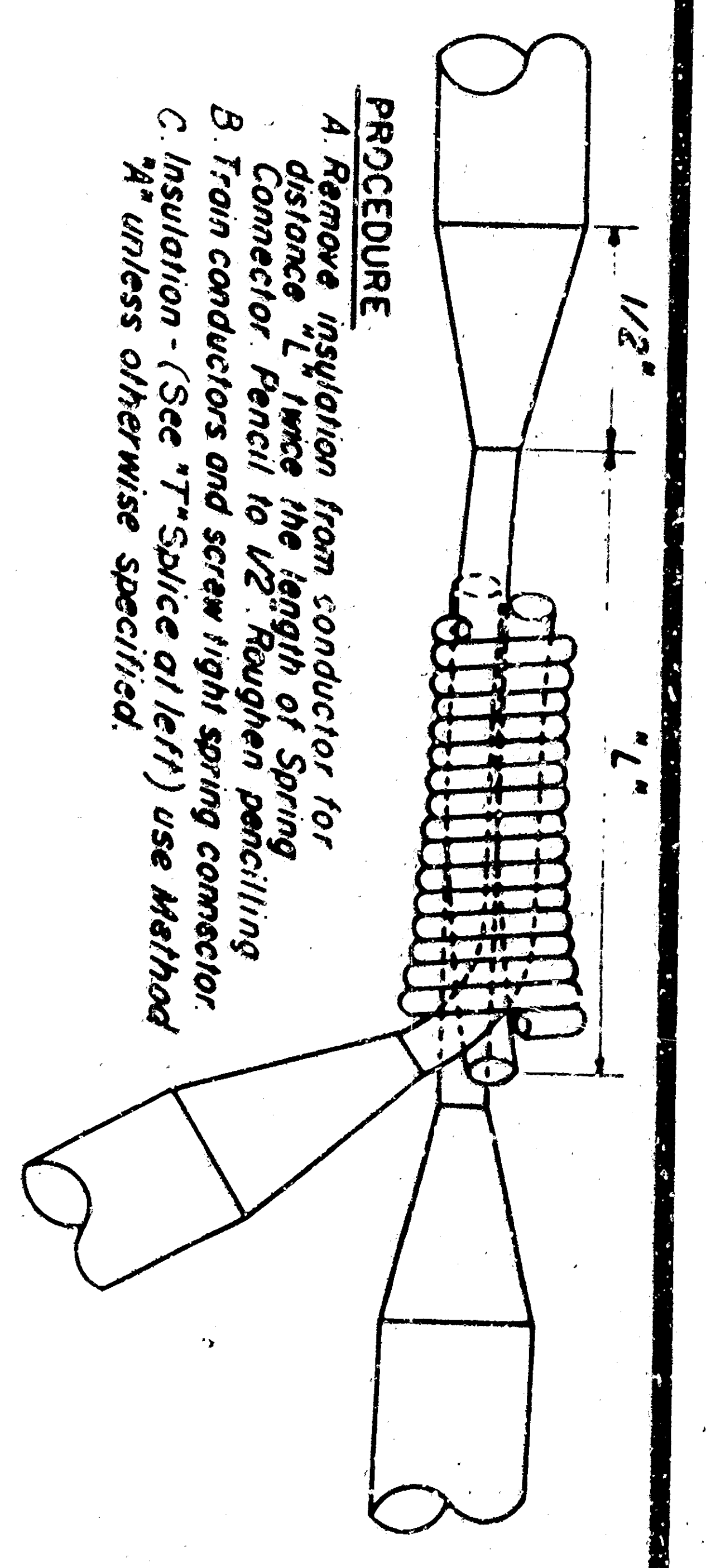
REVISED January 9, 1959  
 DRAWING NO. 36728 SHEET 2 OF 3 SHEETS



STRAIGHT SPLICE DIMENSIONS - Inches			
AWG	"B"	"D"	"C"
600 Volt 14, 12 or 10 Solid	2"	1/2"	1/2"
600 Volt 8, 6 or 4 Stranded 2 1/2"	3 1/4"	1/2"	1/2"
5000 Volt 8 Solid	3 1/4"	1/2"	1/2"
T-SPLICE DIMENSIONS - Inches			
AWG	"B"	"D"	"C"
600 Volt 14, 12 or 10 Solid	2"	1/2"	1/2"

**600 VOLT "T" SPLICE**  
 (Up to 10 AWG only)

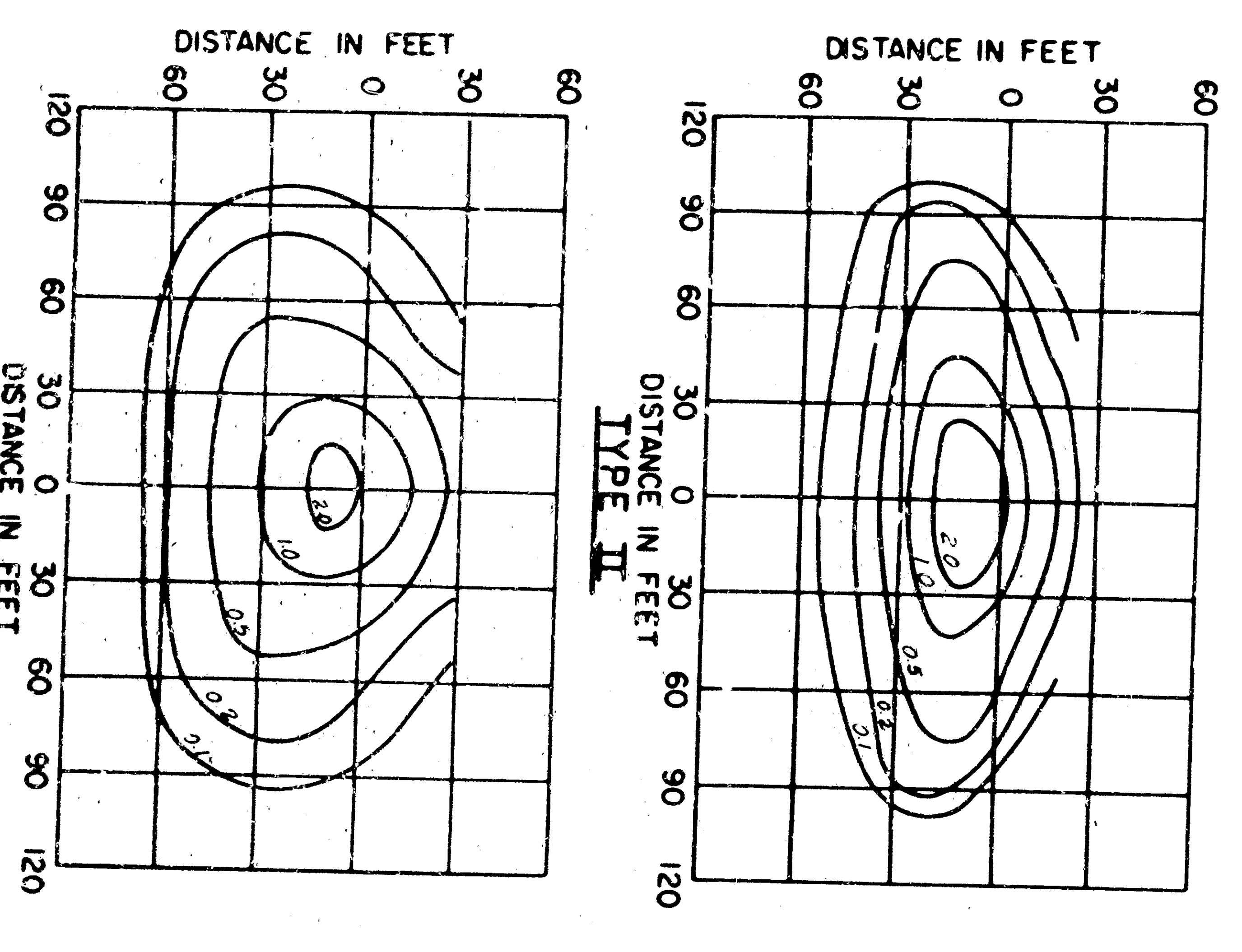
**PROCEDURE**  
 A. Remove insulation from each conductor to distance 1/2 C+1/2 and pencil to dimension D. Roughen, sanding  
 B. Train conductors and place connector, centering over butted cable ends.  
 C. Crimp and solder connector.  
 D. Insulate according to Method "A" unless otherwise specified.



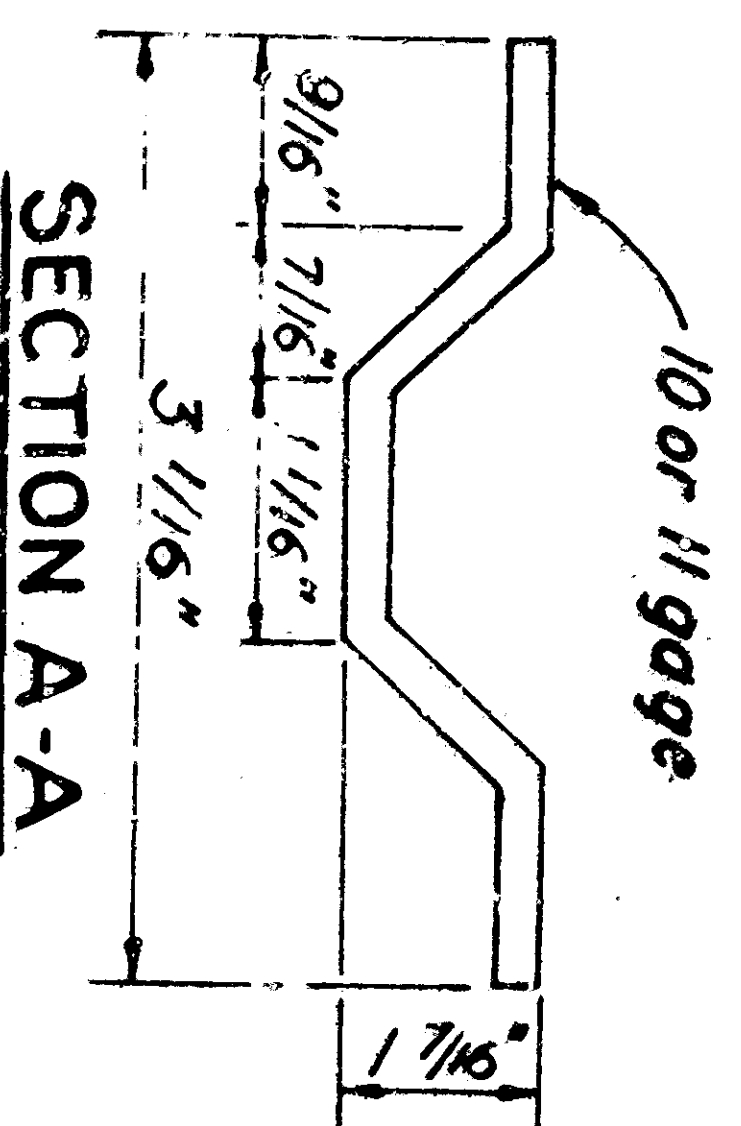
**ALTERNATE 600 VOLT "T" SPLICE ELECTRICAL SPRING CONNECTOR**  
 No. 14 AWG and larger

- INSULATING METHOD "A"**  
 No. 14 AWG and larger  
 Apply one coat of approved rubber cement allow 15-20 min. For Circuits Up to 2000 Volts
- Apply self-fusing synthetic rubber tape (see "B" thickness equal to original insulation)
  - Apply self-fusing synthetic rubber tape (see "B" thickness equal to original insulation)
  - Apply the layers of self-fusing synthetic rubber tape, half lapped, outer tapes shall be rolled over each other, with center filler.
  - Apply two layers of self-fusing synthetic rubber tape, half lapped.
  - Apply 20-30 mil thick P.V.C. tape to thickness equal to original insulation.
  - Apply two layers of asphalt-impregnated open meshed fabric tape (not splice with same compound as in tape and use in).

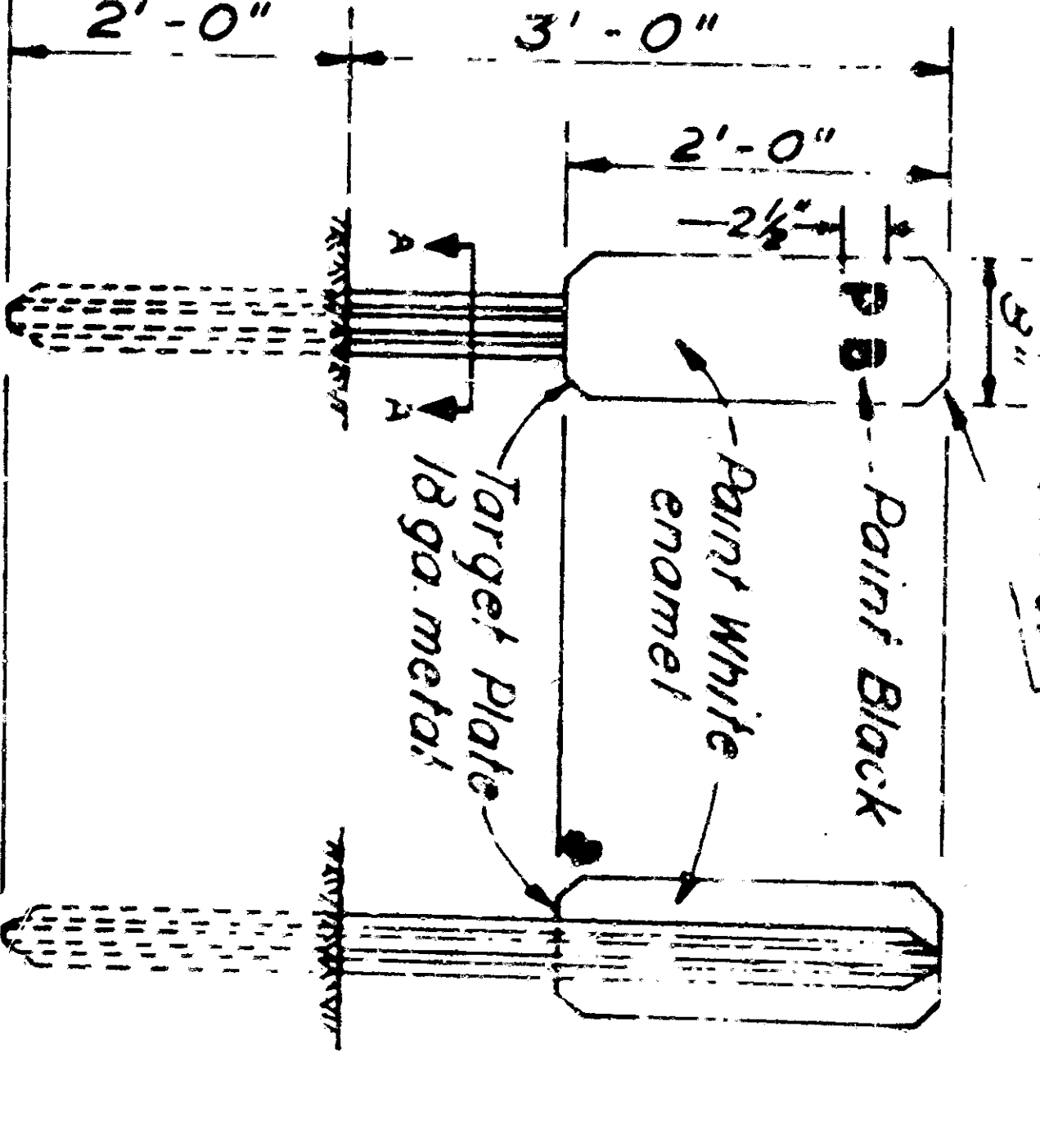
**SPLICING DETAILS**



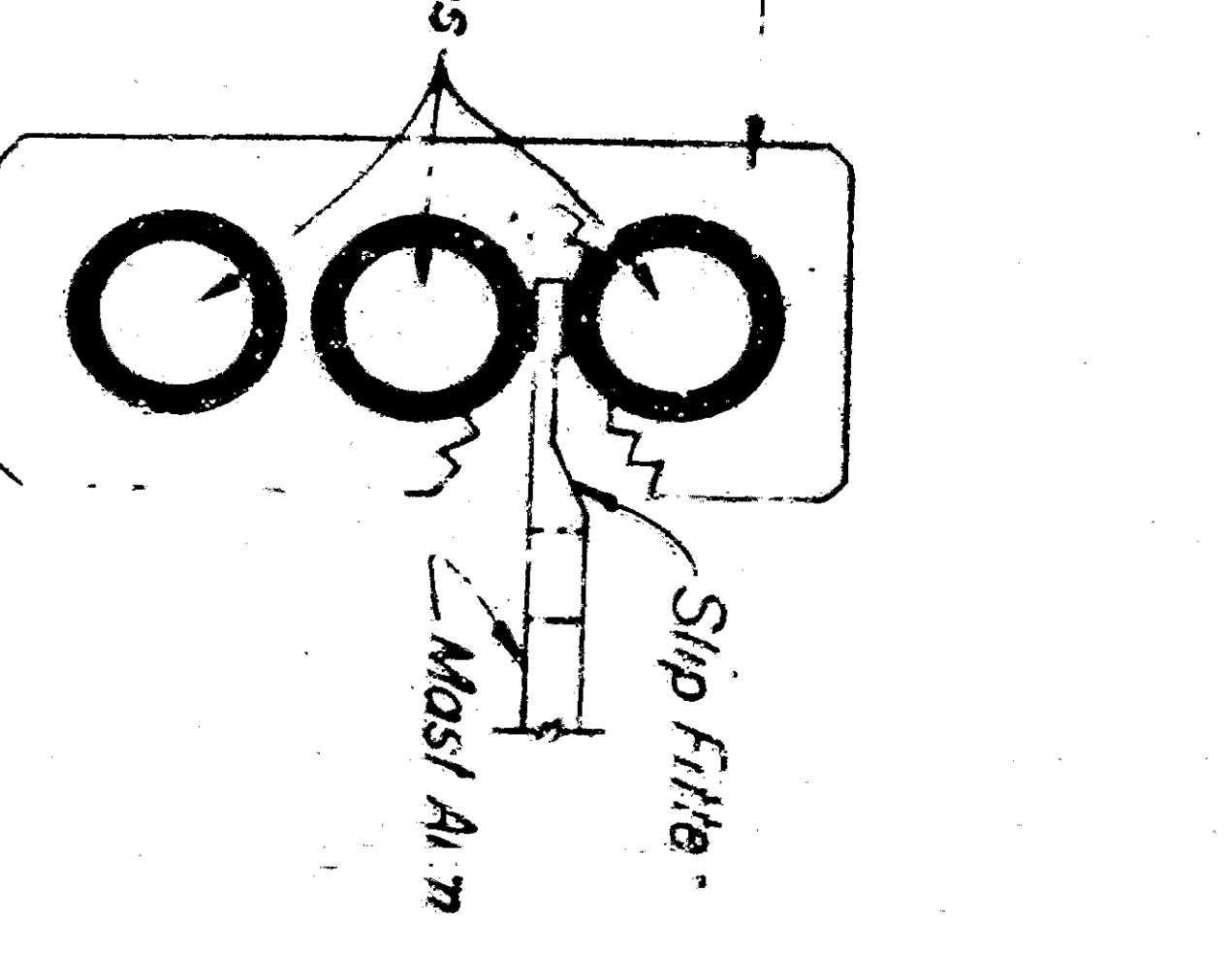
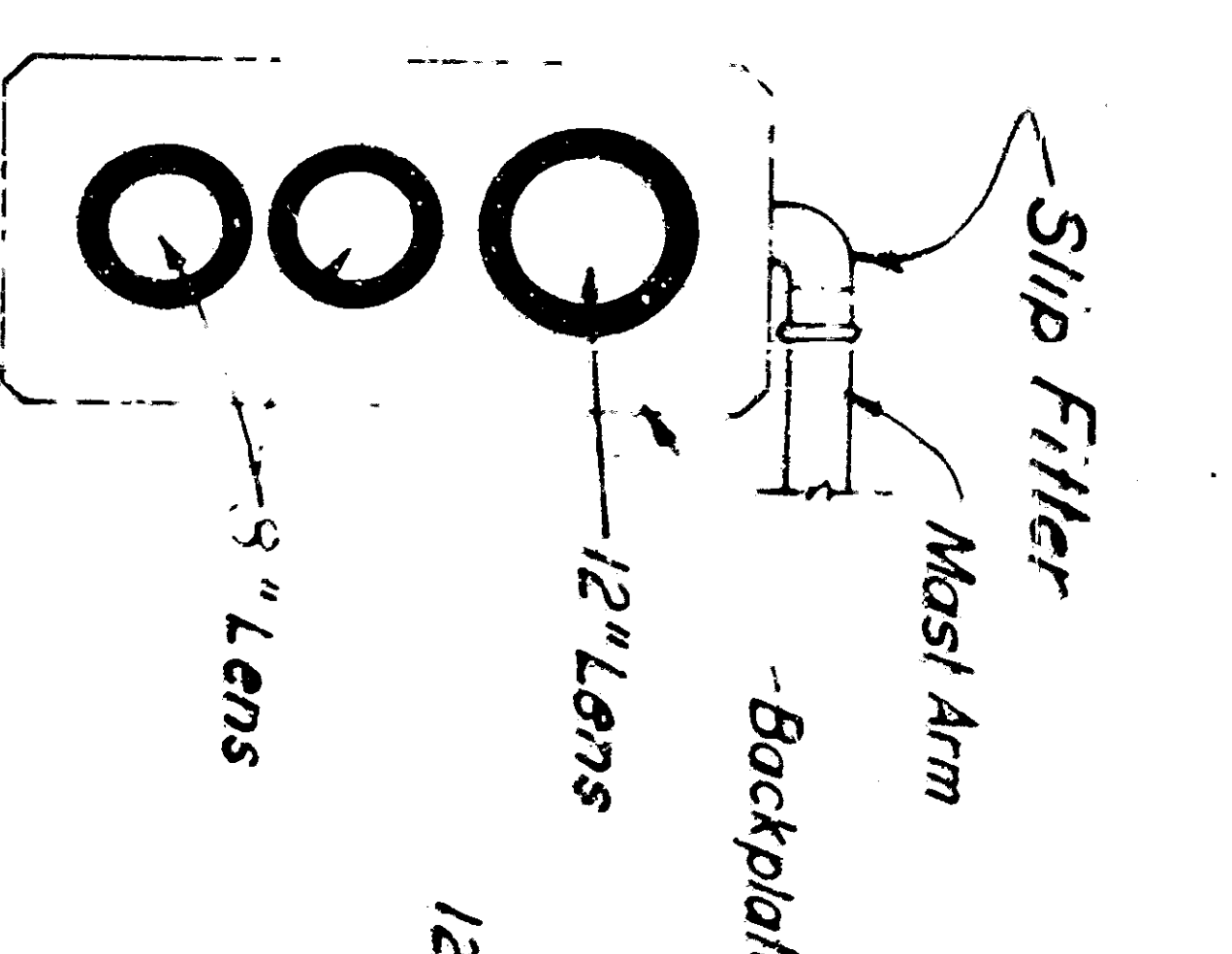
**ISOLUX LINES OF MINIMUM HORIZONTAL FOOT CANDLES**  
 Shielded Highway Lighting Luminaire 30' Mounting Height,  
 20,000 Lumen Mercury Vapor Lamp



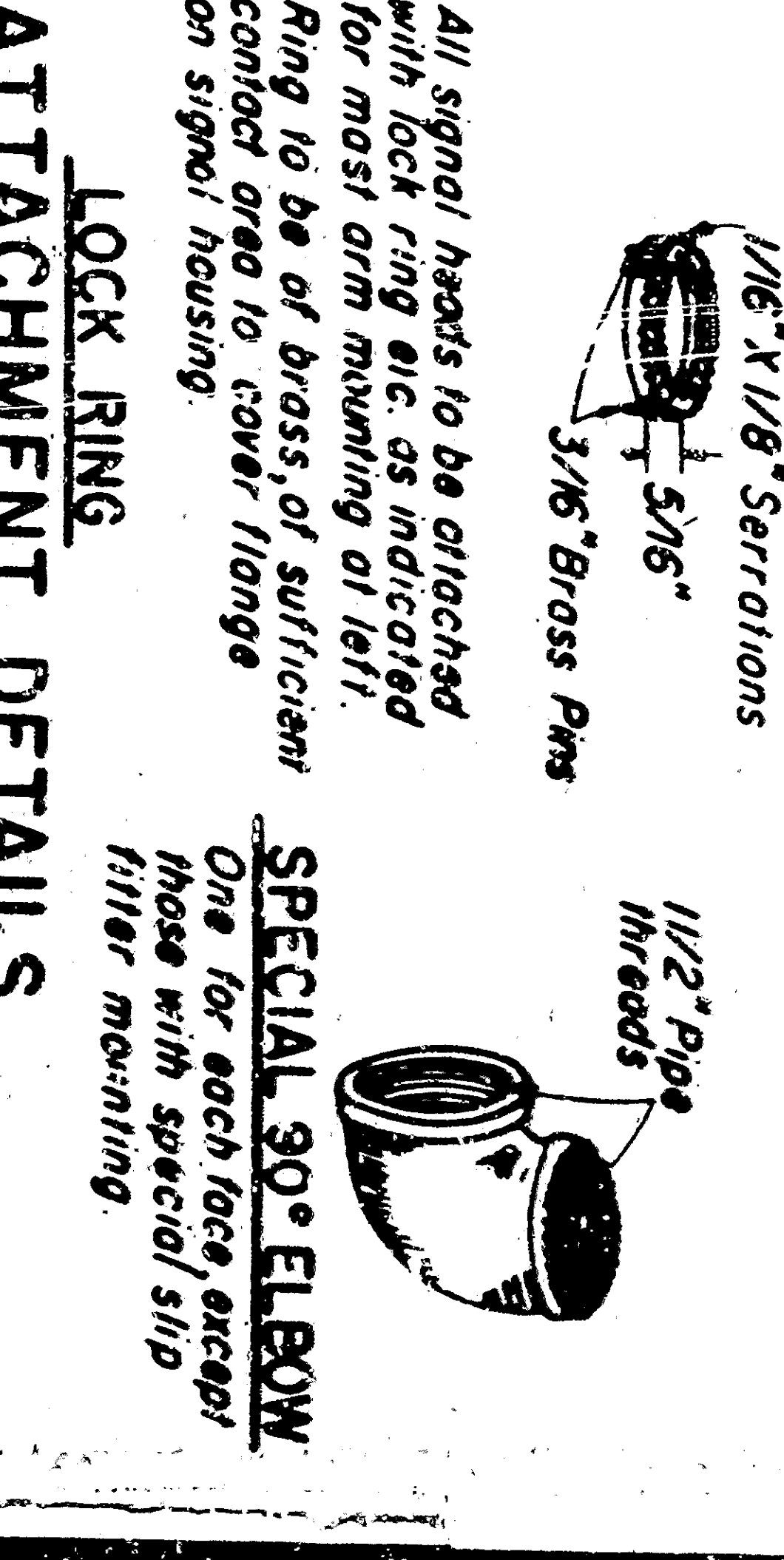
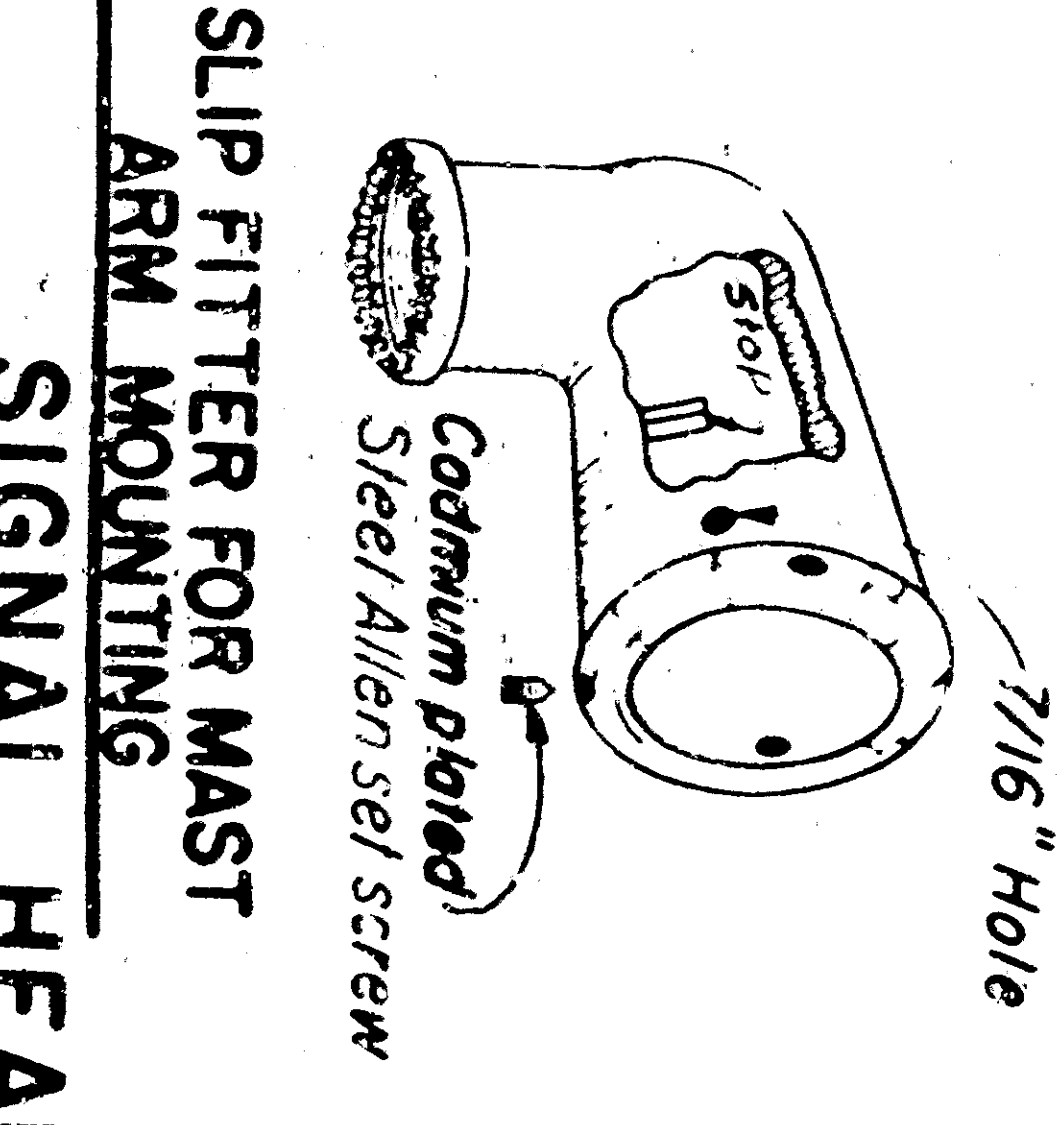
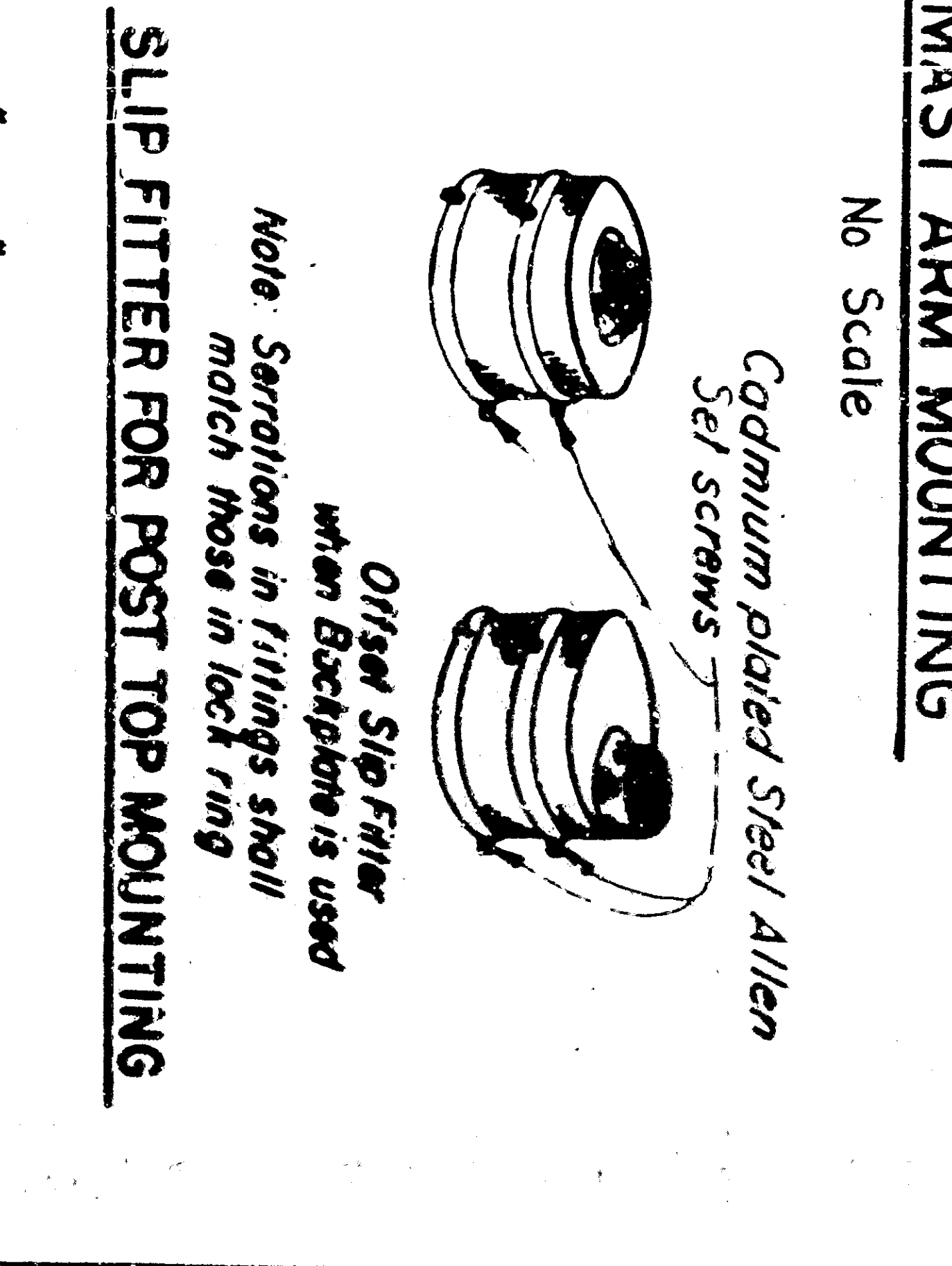
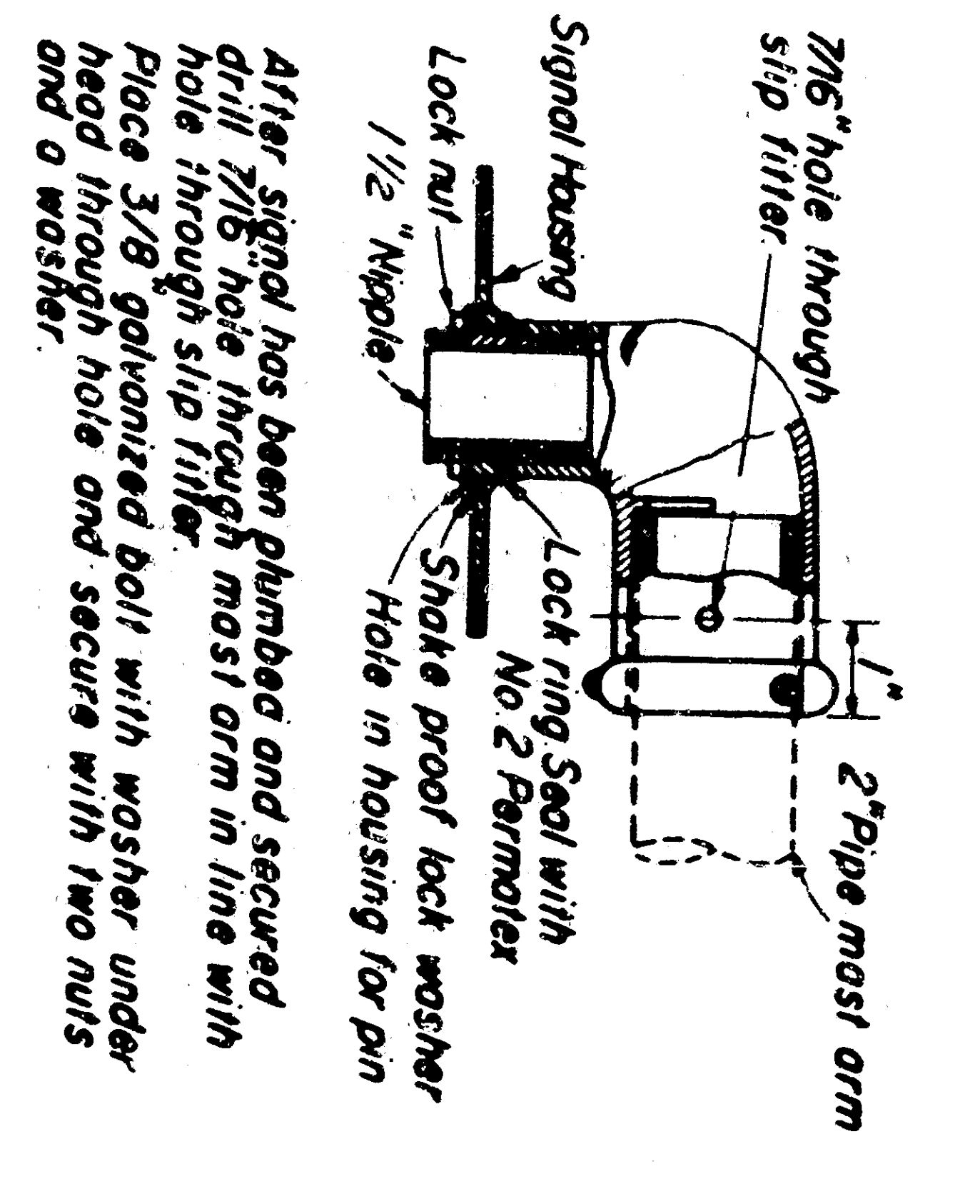
**SECTION A-A**



**PULL BOX MARKER**  
 (Type A Scribe Post - No Reflector)  
 No Scale

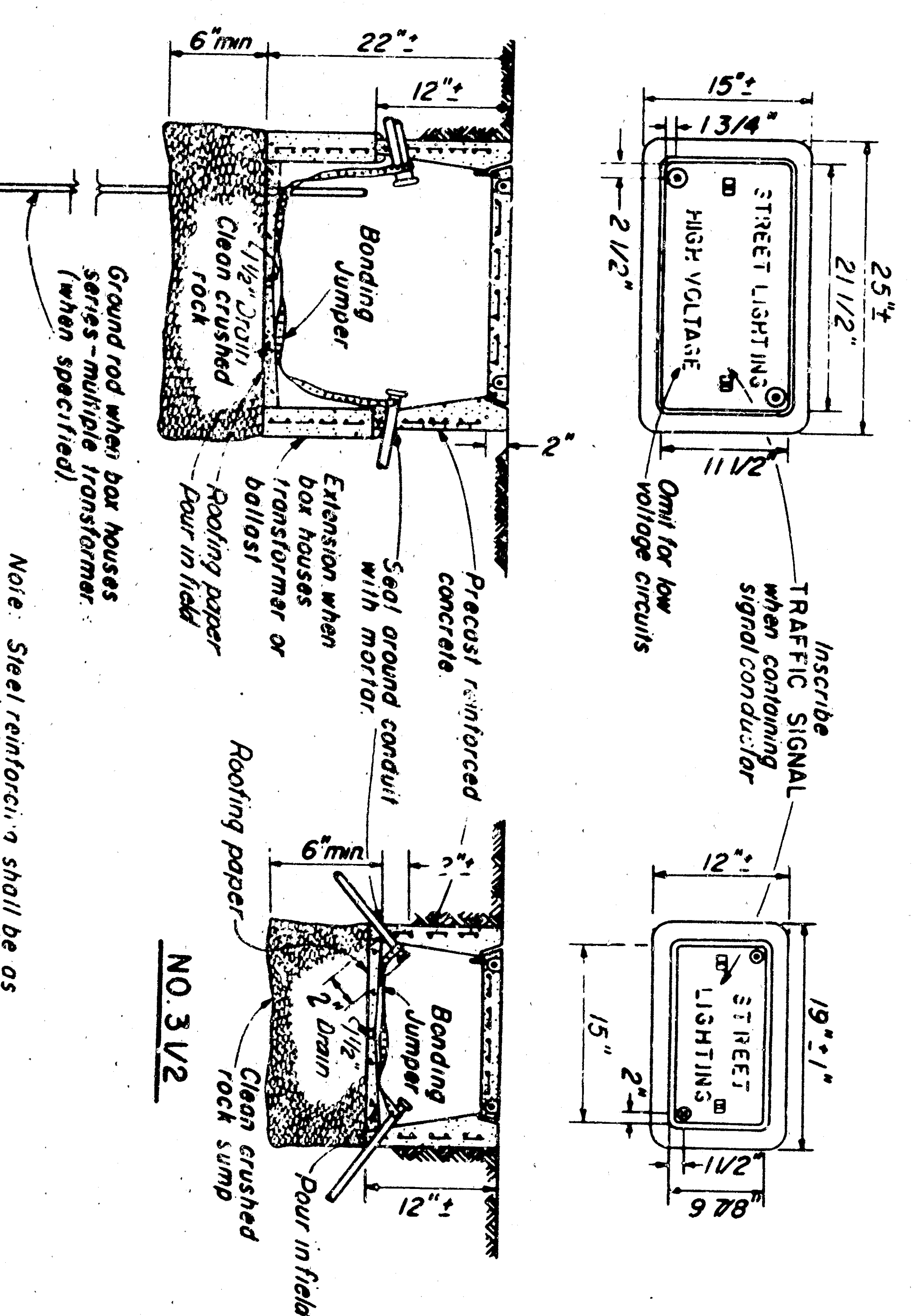


**MAST ARM MOUNTING**  
 No Scale



**SPECIAL 30° ELBOW**  
 One for each for angle those with special slip filter mounting.

**PULL BOXES**  
 NO SCALE



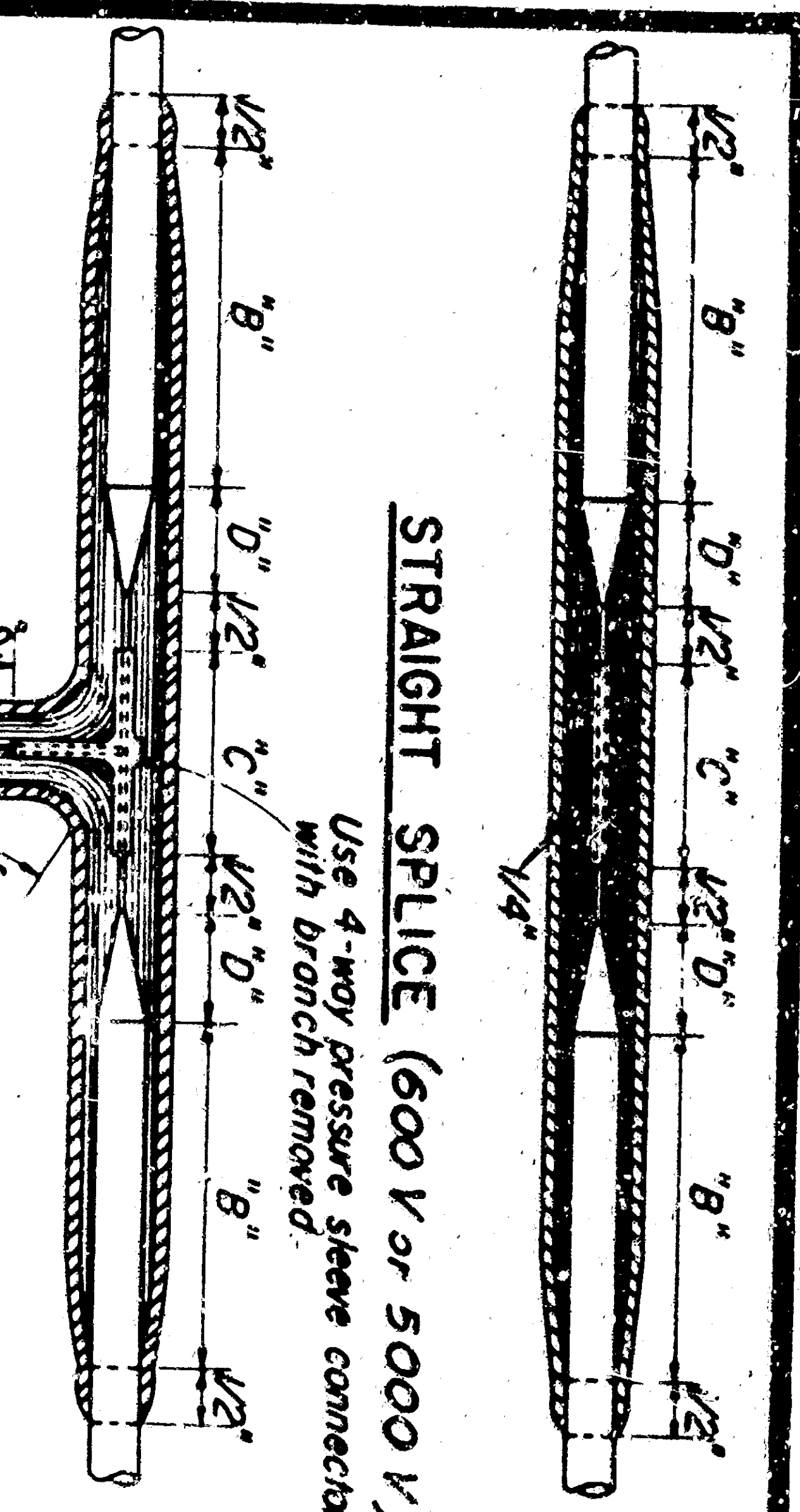
**PROCEDURE**  
 A. Remove insulation from conductor for 1/2 C+1/2 and pencil to dimension D. Roughen, sanding  
 B. Train conductors and place connector, centering over butted cable ends.  
 C. Crimp and solder connector.  
 D. Insulate according to Method "A" unless otherwise specified.

**STANDARD DETAILS NO. 3**  
 DEPARTMENT OF PUBLIC WORKS  
 DIVISION OF HIGHWAYS  
 TRAFFIC SIGNAL AND  
 HIGHWAY LIGHTING  
 INSTALLATIONS



DATE	COUNT	NO.	SECTION	SHEET	TOTAL

REVISED January 9, 1959  
 DRAWING NO. 36729 SHEET 2 OF 3 SHEETS

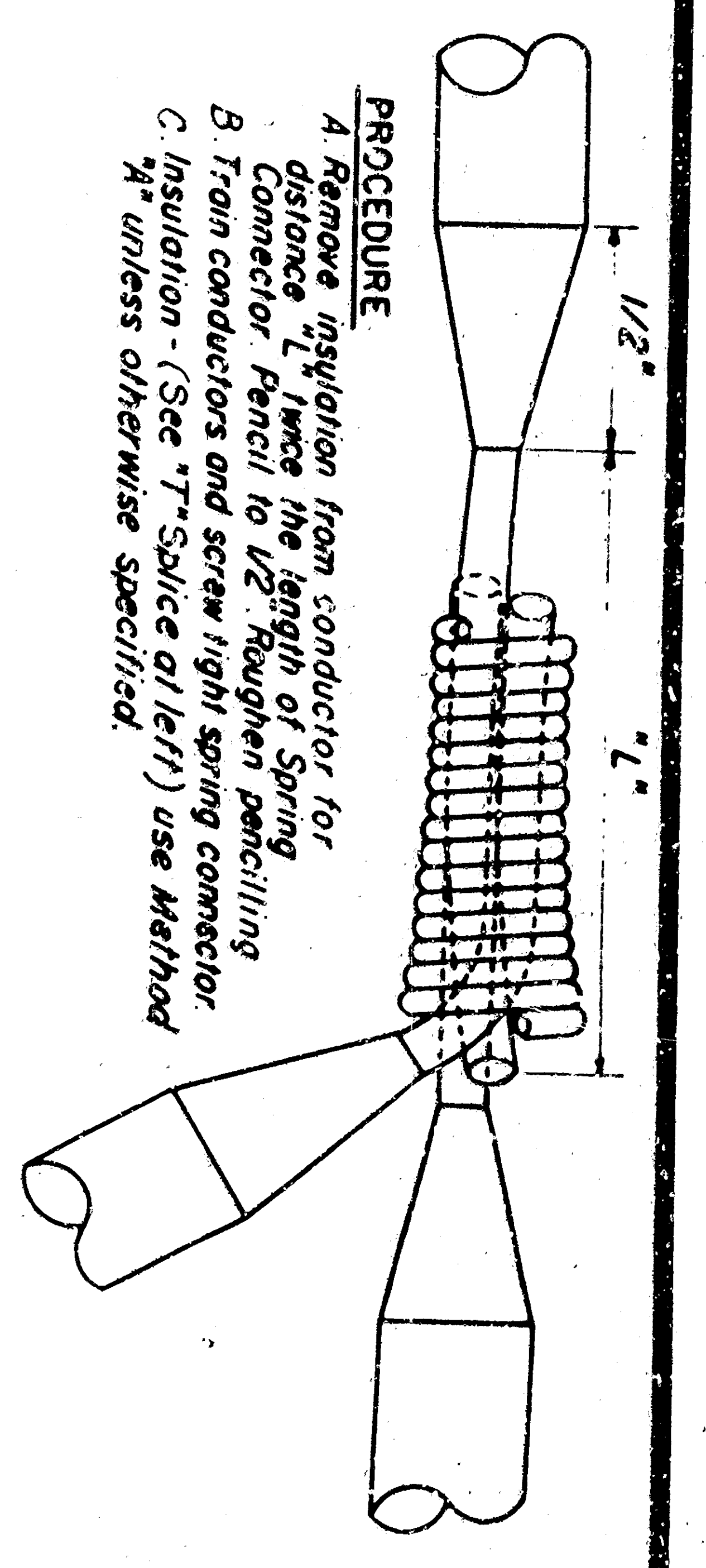


**STRAIGHT SPLICE (600 V or 5000 V)**  
 Use 4-way pressure sleeve connector with branch removed.

STRAIGHT SPLICE DIMENSIONS - Inches			
AWG	"B"	"D"	"C"
600 Volt 14, 12 or 10 Solid	2"	1 1/2"	1 1/2"
600 Volt 8, 6 or 4 Stranded	2 1/2"	1 1/2"	1 1/2"
5000 Volt 8 Solid	3 1/4"	1"	1"
T. SPLICE DIMENSIONS - Inches			
AWG	"B"	"D"	"C"
600 Volt 14, 12 or 10 Solid	2"	1 1/2"	1 1/2"

**600 VOLT "T" SPLICE**  
 (Up to 10 AWG only)

**PROCEDURE**  
 A Remove insulation from each conductor to distance 1/2 C+1/2 and pencil to dimension D. Roughen, sanding B Train conductors and place connector, centering over burred cable ends. C Crimp and solder connector. D Insulate according to Method X unless otherwise specified.

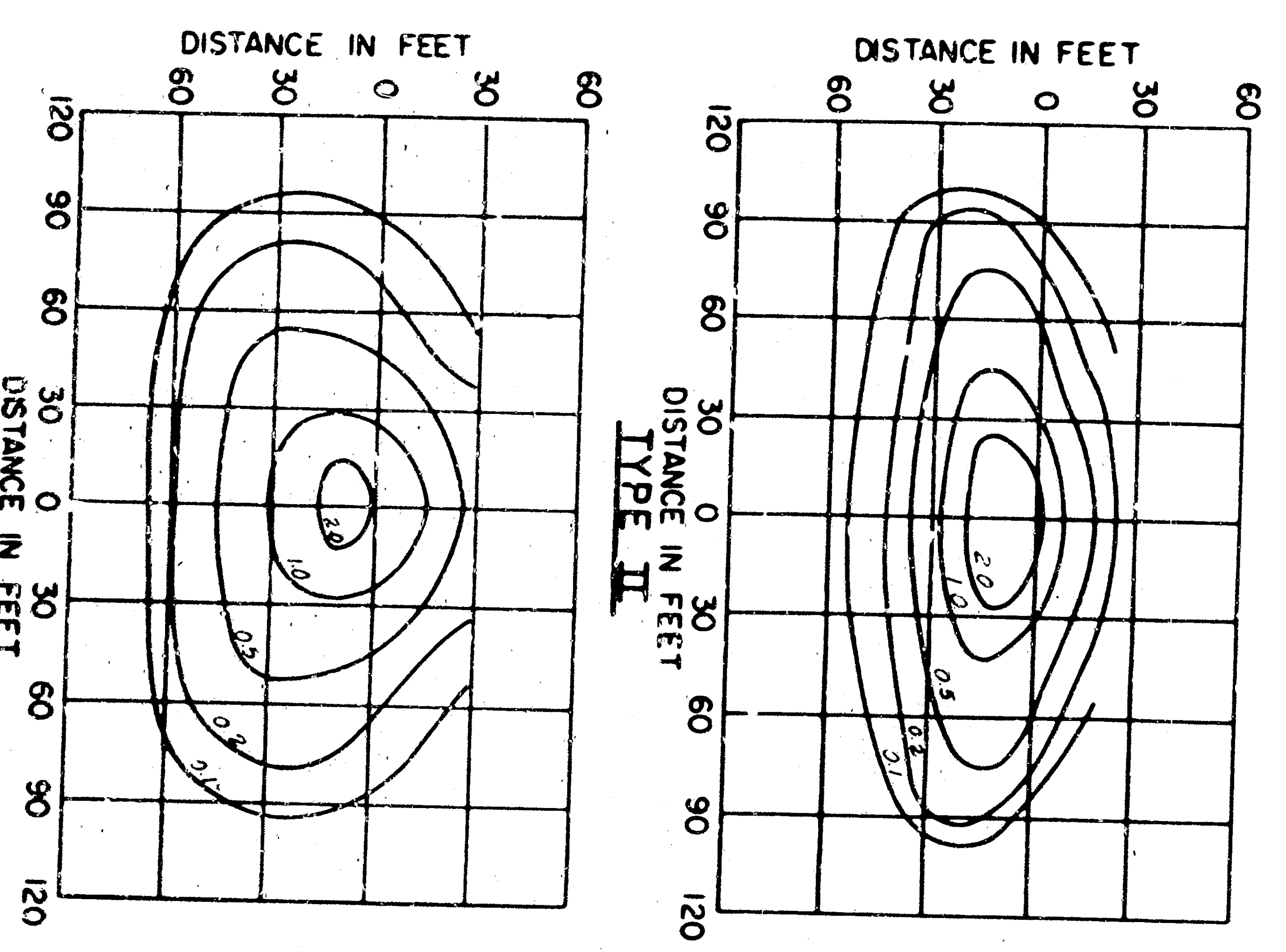


**ALTERNATE 600 VOLT "T" SPLICE ELECTRICAL SPRING CONNECTOR**  
 No. 14 AWG and larger

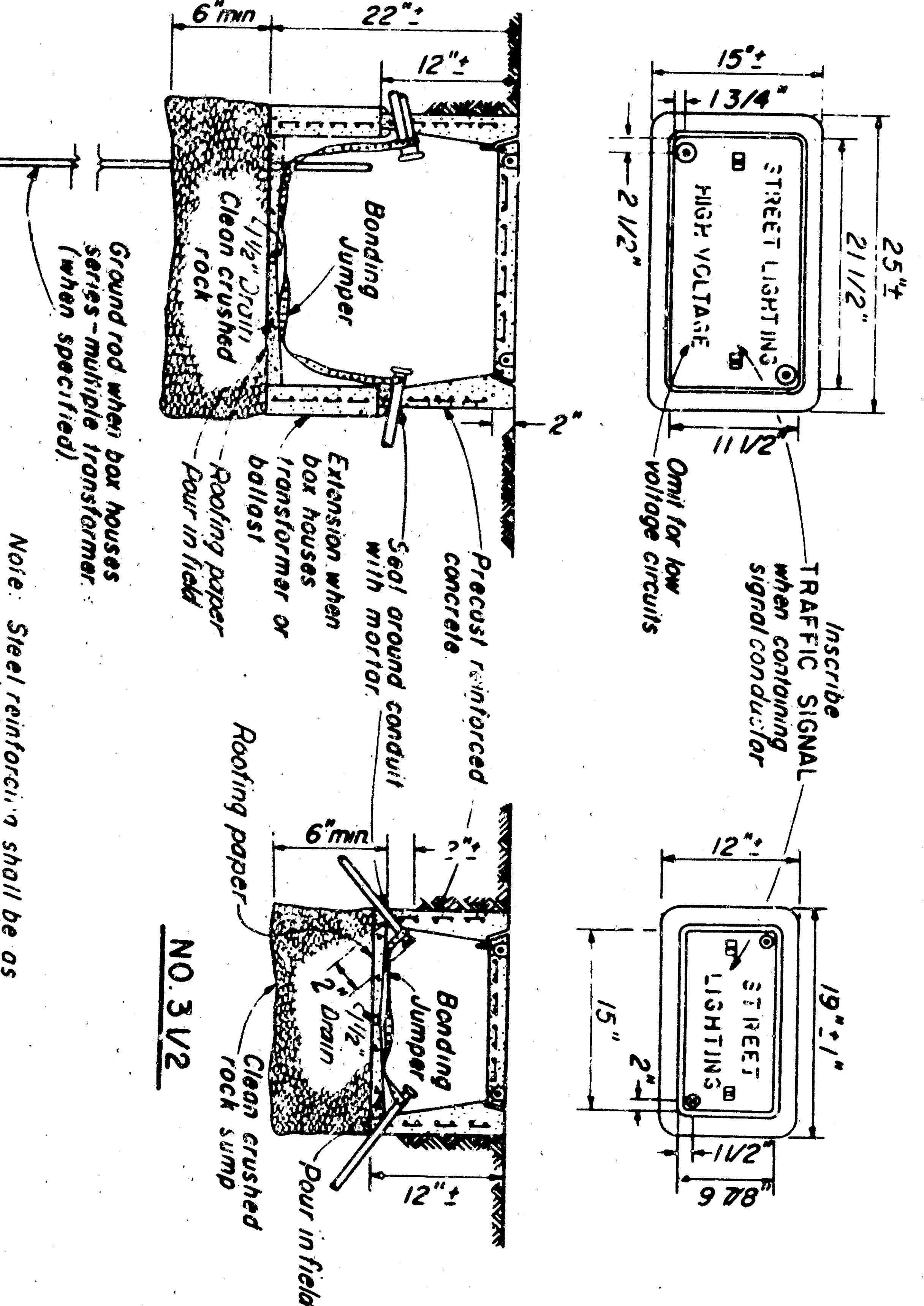
**INSULATING METHOD "A"**

- 1 Apply one coat of approved rubber cement allow 72-hr dry for Circuits Up to 2000 Volts
- 2 Apply self-fusing synthetic rubber tape (see 5.3 thickness equal to original insulation)
- 3 Apply self-fusing synthetic rubber tape (see 5.3 thickness equal to original insulation)
- 4 Apply two layers of self-fusing synthetic rubber tape, half lapped.
- 5 Apply 207 thick P.V.C. tape to thickness equal to original insulation.
- 6 Apply two layers of asphalt-impregnated open meshed fabric tape (see 5.3 thickness equal to original insulation) with concrete filler.

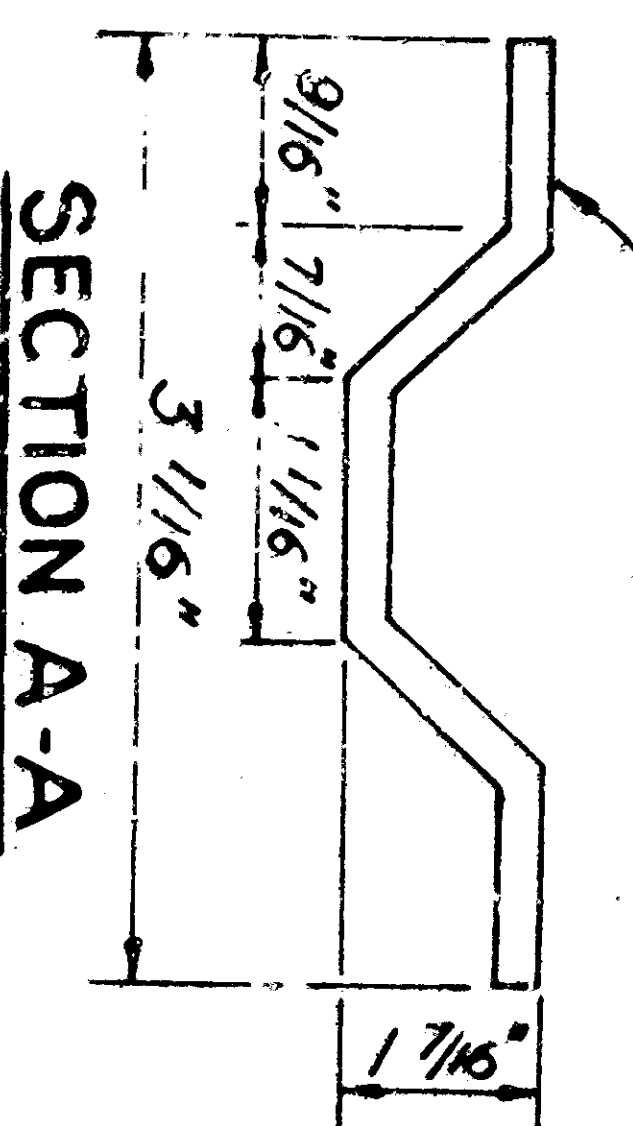
**SPLICING DETAILS**



Shielded Highway Lighting Luminaire 30 Mounting Height,  
 20,000 Lumen Mercury Vapor Lamp  
**ISOLUX LINES OF MINIMUM HORIZONTAL FOOT CANDLES**  
 TYPE III

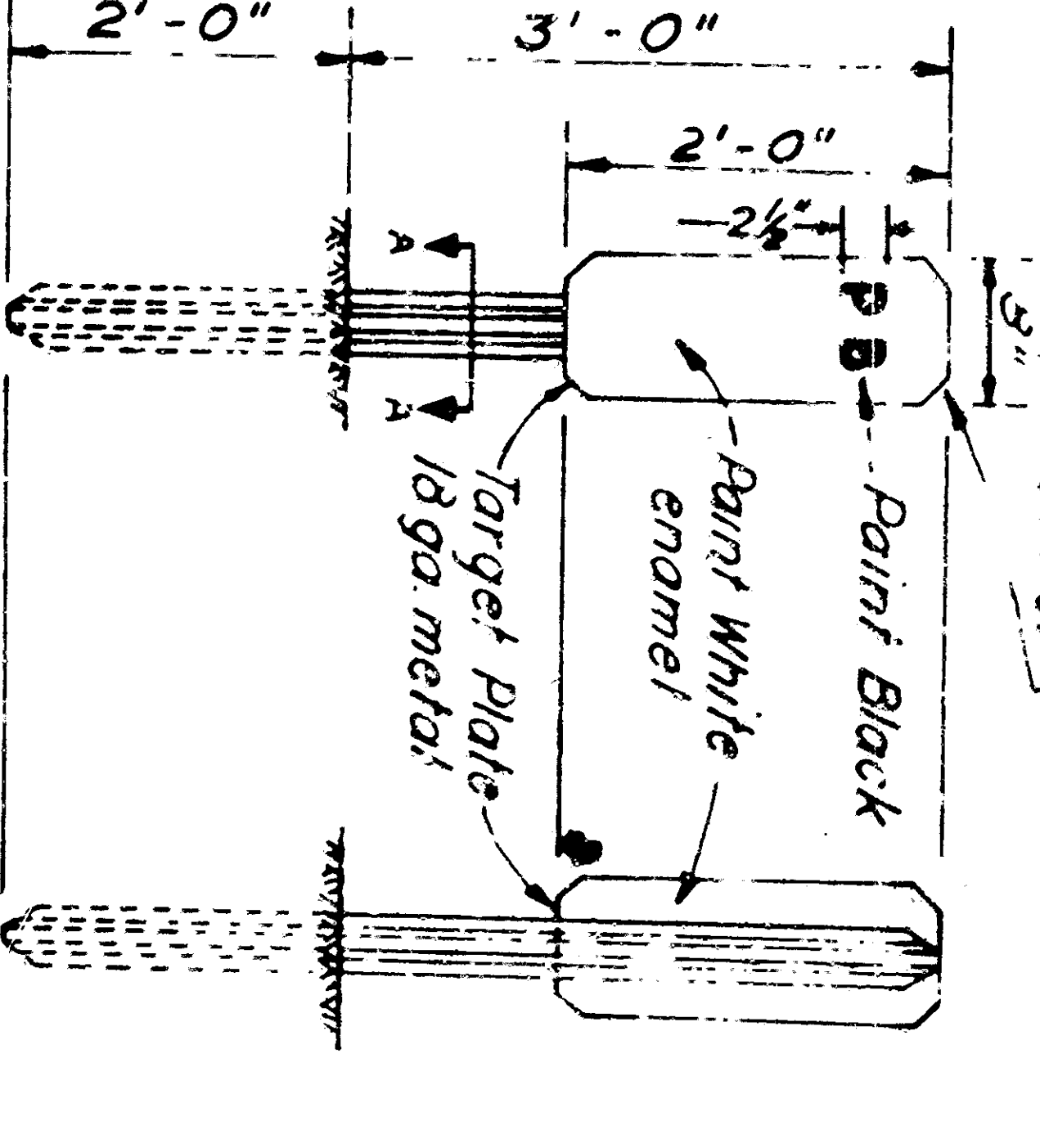


**PULL BOXES**  
 NO SCALE

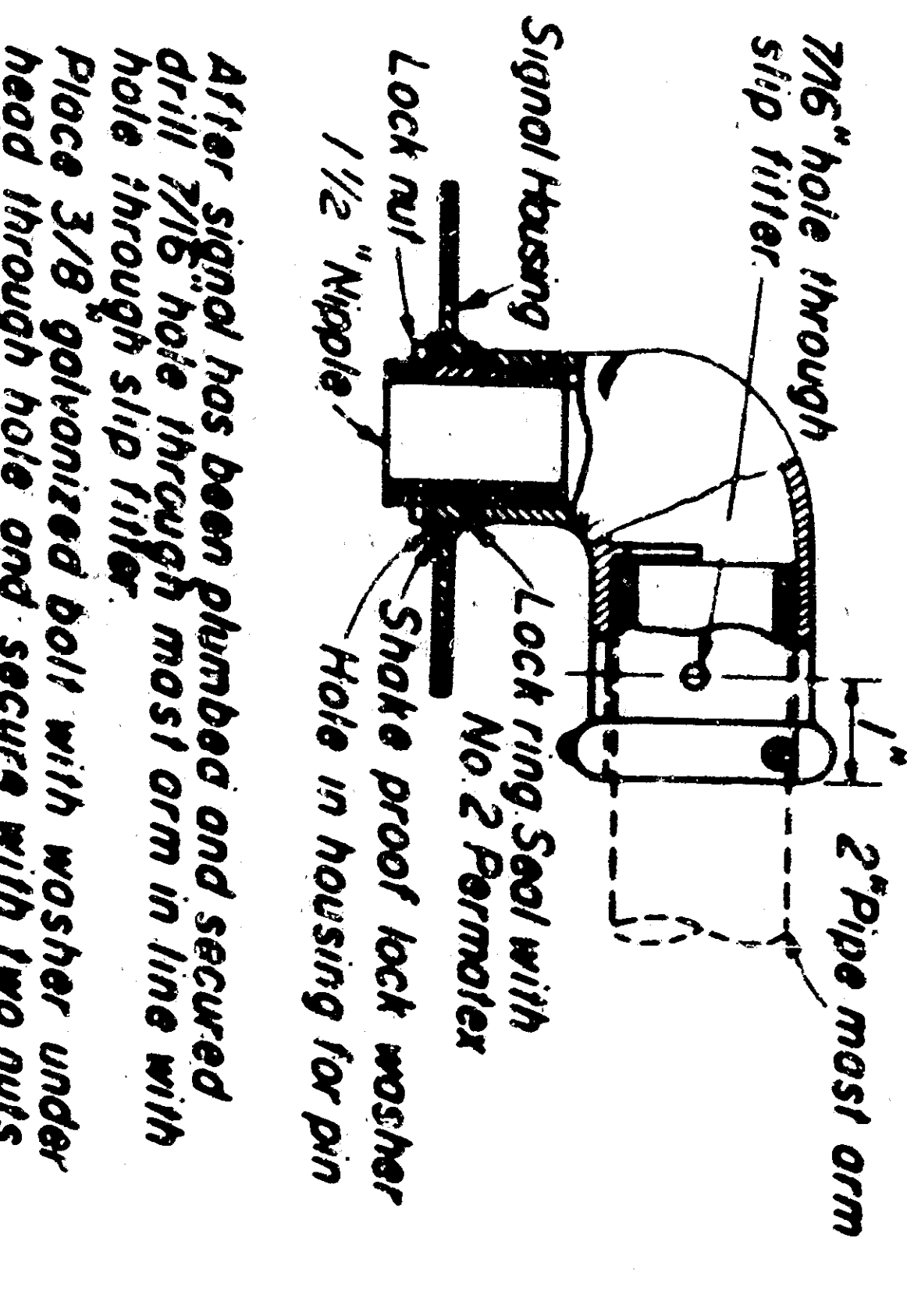


**SECTION A-A**

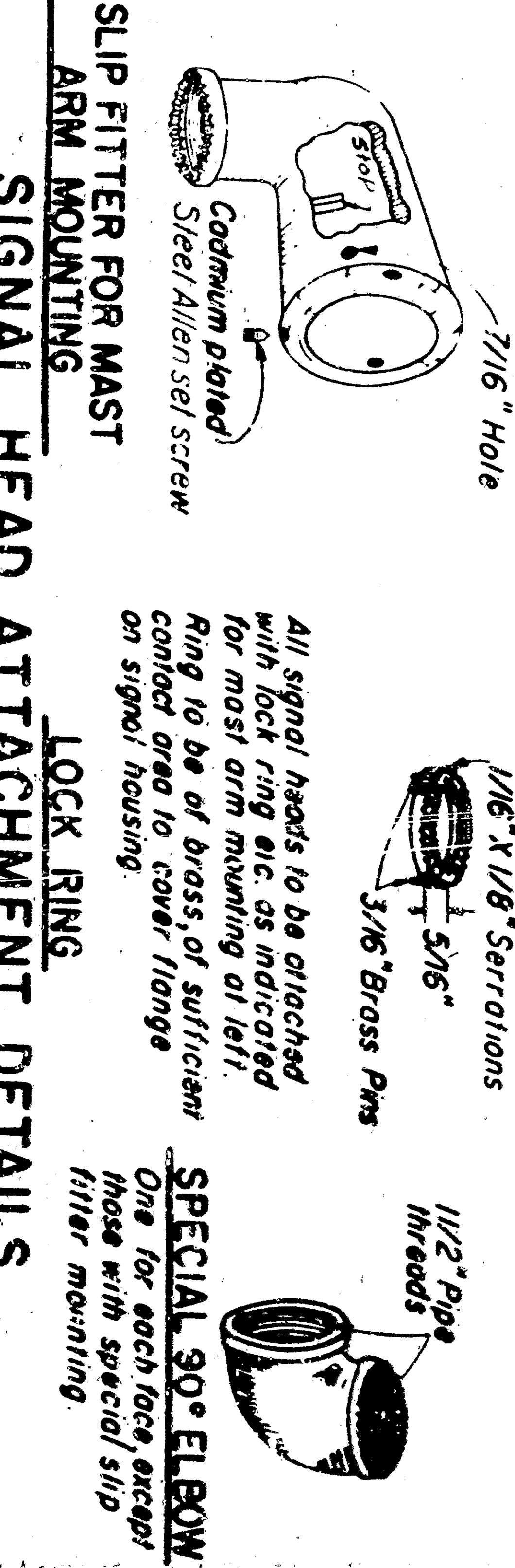
**PULL BOX MARKER**  
 NO SCALE



**MAST ARM MOUNTING**  
 NO SCALE



**SPECIAL 90° ELBOW LOCK RING**



**LOCK RING**

**SIGNAL HEAD ATTACHMENT DETAILS**  
 NO SCALE

STATE OF CALIFORNIA  
 DEPARTMENT OF PUBLIC WORKS  
 DIVISION OF HIGHWAYS  
**STANDARD DETAILS NO. 3**  
 TRAFFIC SIGNAL AND  
 HIGHWAY LIGHTING  
 INSTALLATIONS  
 SCALE AS NOTED  
 REV DATE 6-7-59  
 DRAWING NO. E